

Test Report

No.: SZXEC24001521902

Date: May 23, 2024

Page 1 of 9

Client Name: SHENZHEN JDT FUSE INDUSTRIAL CO., LTD.

Client Address: 5/F, BUILDING 23, LONGBI INDUSTRIAL ZONE, BANTIAN STREET, LONGGANG DISTRICT, SHENZHEN

Sample Name: FUSE(JFC2410-1100FS)

Model No.: JFC2410-1100FS

Client Ref. Information: Please see attachments

The above sample(s) and information were provided by the client.

SGS Job No.: SZP24-020763

Sample Receiving Date: May 15, 2024

Testing Period: May 15, 2024 ~ May 21, 2024

Test Requested: Select test(s) as requested by the client.

Test Method(s): Please refer to next page(s).

Test Result(s): Please refer to next page(s).

| Test Requirement | Conclusion |
|---|------------|
| EU RoHS Directive (EU) 2015/863 amending Annex II to Directive 2011/65/EU - Lead, Mercury, Cadmium, Hexavalent chromium, Polybrominated biphenyls (PBB), Polybrominated diphenyl ethers (PBDE), Bis(2-ethylhexyl) phthalate (DEHP), Butyl benzyl phthalate (BBP), Dibutyl phthalate (DBP) and Diisobutyl phthalate (DIBP) | Pass |

Signed for and on behalf of
SGS-CSTC Standards Technical Services Co., Ltd. Shenzhen Branch

Fay

Fay Yuan

Approved Signatory

scan to see the report



5E4C680B



SGS-CSTC Standards Technical Services Co., Ltd.
Shenzhen Branch Testing Center Chemical Laboratory

Unless otherwise agreed in writing, this document is issued by the Company subject to its General Conditions of Service printed overleaf, available on request or accessible at <http://www.sgs.com/en/Terms-and-Conditions.aspx> and, for electronic format documents, subject to Terms and Conditions for Electronic Documents at <http://www.sgs.com/en/Terms-and-Conditions/Terms-e-Documents.aspx>. Attention is drawn to the limitation of liability, indemnification and jurisdiction issues defined therein. Any holder of this document is advised that information contained hereon reflects the Company's findings at the time of its intervention only and within the limits of Client's instructions, if any. The Company's sole responsibility is to its Client and this document does not exonerate parties to a transaction from exercising all their rights and obligations under the transaction documents. This document cannot be reproduced except in full, without prior written approval of the Company. Any unauthorized alteration, forgery or falsification of the content or appearance of this document is unlawful and offenders may be prosecuted to the fullest extent of the law. Unless otherwise stated the results shown in this test report refer only to the sample(s) tested.

Attention: To check the authenticity of testing /inspection report & certificate, please contact us at telephone: (86-755) 8307 1443, or email: CN.Doccheck@sgs.com

Room 101-901, Plant 4 & Room 101, Plant 2 & Room 101, Plant 3 & Room 301-501, Plant 3, Jianghao (Bantian) Industrial Plant Area, No. 430, Jihua Road, Bantian Community, Bantian Street, Longgang District, Shenzhen, Guangdong, China 518129 www.sgs.com
中国·广东·深圳市龙岗区坂田街道坂田社区吉华路430号江豪(坂田)工业厂区厂房4号101-901、2号101、3号101、3号301-501 邮编:518129 t(86-755)25328888 sgs.china@sgs.com

Test Report

No.: SZXEC24001521902

Date: May 23, 2024

Page 2 of 9

Test Result(s):

Test Part Description:

| SN ID | Sample No. | SGS Sample ID | Description |
|-------|------------|-------------------------|------------------------|
| SN1 | A7 | SZX24-0015219-0001.C007 | "FUSE(JFC2410-1100FS)" |

Remarks:

- (1) 1 mg/kg = 1 ppm = 0.0001%
- (2) MDL = Method Detection Limit
- (3) ND = Not Detected (< MDL)
- (4) "-" = Not Regulated

EU RoHS Directive (EU) 2015/863 amending Annex II to Directive 2011/65/EU - Lead, Mercury, Cadmium, Hexavalent chromium, Polybrominated biphenyls (PBB), Polybrominated diphenyl ethers (PBDE), Bis(2-ethylhexyl) phthalate (DEHP), Butyl benzyl phthalate (BBP), Dibutyl phthalate (DBP) and Diisobutyl phthalate (DIBP)

Test Method: With reference to IEC 62321-4:2013+AMD1:2017, IEC 62321-5:2013, IEC 62321-7-2:2017, IEC 62321-6:2015 and IEC 62321-8:2017, analysis was performed by ICP-OES/AAS, UV-Vis and GC-MS.

| Test Item(s) | Limit | Unit(s) | MDL | A7 |
|---|-------|---------|-----|--------|
| Lead (Pb) | 1000 | mg/kg | 2 | 96587▲ |
| Mercury (Hg) | 1000 | mg/kg | 2 | ND |
| Cadmium (Cd) | 100 | mg/kg | 2 | ND |
| Hexavalent Chromium (Cr(VI)) | 1000 | mg/kg | 8 | ND |
| Polybromobiphenyl (PBB) | 1000 | mg/kg | - | ND |
| Monobrominated biphenyl (MonoBB) | - | mg/kg | 5 | ND |
| Dibrominated biphenyl (DiBB) | - | mg/kg | 5 | ND |
| Tribrominated biphenyl (TriBB) | - | mg/kg | 5 | ND |
| Tetrabrominated biphenyl (TetraBB) | - | mg/kg | 5 | ND |
| Pentabrominated biphenyl (PentaBB) | - | mg/kg | 5 | ND |
| Hexabrominated biphenyl (HexaBB) | - | mg/kg | 5 | ND |
| Heptabrominated biphenyl (HeptaBB) | - | mg/kg | 5 | ND |
| Octabrominated biphenyl (OctaBB) | - | mg/kg | 5 | ND |
| Nonabrominated biphenyl (NonaBB) | - | mg/kg | 5 | ND |
| Decabrominated biphenyl (DecaBB) | - | mg/kg | 5 | ND |
| Polybromodiphenyl ether (PBDE) | 1000 | mg/kg | - | ND |
| Monobrominated diphenyl ether (MonoBDE) | - | mg/kg | 5 | ND |
| Dibrominated diphenyl ether (DiBDE) | - | mg/kg | 5 | ND |
| Tribrominated diphenyl ether (TriBDE) | - | mg/kg | 5 | ND |
| Tetrabrominated diphenyl ether (TetraBDE) | - | mg/kg | 5 | ND |
| Pentabrominated diphenyl ether (PentaBDE) | - | mg/kg | 5 | ND |
| Hexabrominated diphenyl ether (HexaBDE) | - | mg/kg | 5 | ND |
| Heptabrominated diphenyl ether (HeptaBDE) | - | mg/kg | 5 | ND |



SGS-CTC (Shenzhen) Technical Services Co., Ltd.
Shenzhen Branch Testing Center Chemical Laboratory

Unless otherwise agreed in writing, this document is issued by the Company subject to its General Conditions of Service printed overleaf, available on request or accessible at <http://www.sgs.com/en/Terms-and-Conditions.aspx> and, for electronic format documents, subject to Terms and Conditions for Electronic Documents at <http://www.sgs.com/en/Terms-and-Conditions/Terms-e-Documents.aspx>. Attention is drawn to the limitation of liability, indemnification and jurisdiction issues defined therein. Any holder of this document is advised that information contained hereon reflects the Company's findings at the time of its intervention only and within the limits of Client's instructions, if any. The Company's sole responsibility is to its Client and this document does not exonerate parties to a transaction from exercising all their rights and obligations under the transaction documents. This document cannot be reproduced except in full, without prior written approval of the Company. Any unauthorized alteration, forgery or falsification of the content or appearance of this document is unlawful and offenders may be prosecuted to the fullest extent of the law. Unless otherwise stated the results shown in this test report refer only to the sample(s) tested.

Attention: To check the authenticity of testing/inspection report & certificate, please contact us at telephone: (86-755) 8307 1443, or email: CN.Doccheck@sgs.com

Room 101-901, Plant 4 & Room 101, Plant 3 & Room 301-501, Plant 3, Jianghao (Bantian) Industrial Plant Area, No. 430, Jihua Road, Bantian Community, Bantian Street, Longgang District, Shenzhen, Guangdong, China 518129 www.sgs.com.cn
中国·广东·深圳市龙岗区坂田街道坂田社区吉华路430号江豪(坂田)工业厂区厂房4号101-901、2号101、3号101、3号301-501 邮编:518129 t (86-755) 25328888 sgs.china@sgs.com

Test Report

No.: SZXEC24001521902

Date: May 23, 2024

Page 3 of 9

| Test Item(s) | Limit | Unit(s) | MDL | A7 |
|---|-------|---------|-----|----|
| Octabrominated diphenyl ether (OctaBDE) | - | mg/kg | 5 | ND |
| Nonabrominated diphenyl ether (NonaBDE) | - | mg/kg | 5 | ND |
| Decabrominated diphenyl ether (DecaBDE) | - | mg/kg | 5 | ND |
| Bis-(2-ethylhexyl) Phthalate(DEHP) | 1000 | mg/kg | 50 | ND |
| Benzyl Butyl Phthalate(BBP) | 1000 | mg/kg | 50 | ND |
| Dibutyl Phthalate(DBP) | 1000 | mg/kg | 50 | ND |
| Diisobutyl Phthalate(DIBP) | 1000 | mg/kg | 50 | ND |

Notes:

- (1) The maximum permissible limit is quoted from RoHS Directive (EU) 2015/863.
- (2) IEC 62321 series is equivalent to EN 62321 series.
- (3) The restriction of DEHP, BBP, DBP and DIBP shall apply to medical devices, including in vitro medical devices, and monitoring and control instruments, including industrial monitoring and control instruments, from 22 July 2021.

Remark▲: According to the declaration from the client, Lead (Pb) is exempted by EU RoHS directive 2011/65/EU based on [ANNEX III 7(a)]: Lead in high melting temperature type solders (i.e. lead-based alloys containing 85 % by weight or more lead).

More information about exemption can be found via the following link:

<https://rohs.sgsonline.com.cn/PDFLinks/en/RSTS-TP-037%20RoHS%20Exemption%20%28EN%29.pdf>

Unless otherwise stated, the decision rule for conformity reporting is based on Binary Statement for Simple Acceptance Rule (w=0) stated in ILAC-G8:09/2019.



SGS-CTC Standards Technical Services Co., Ltd.
Shenzhen Branch Testing Center Chemical Laboratory

Unless otherwise agreed in writing, this document is issued by the Company subject to its General Conditions of Service printed overleaf, available on request or accessible at <http://www.sgs.com/en/Terms-and-Conditions.aspx> and, for electronic format documents, subject to Terms and Conditions for Electronic Documents at <http://www.sgs.com/en/Terms-and-Conditions/Terms-e-Documents.aspx>. Attention is drawn to the limitation of liability, indemnification and jurisdiction issues defined therein. Any holder of this document is advised that information contained hereon reflects the Company's findings at the time of its intervention only and within the limits of Client's instructions, if any. The Company's sole responsibility is to its Client and this document does not exonerate parties to a transaction from exercising all their rights and obligations under the transaction documents. This document cannot be reproduced except in full, without prior written approval of the Company. Any unauthorized alteration, forgery or falsification of the content or appearance of this document is unlawful and offenders may be prosecuted to the fullest extent of the law. Unless otherwise stated the results shown in this test report refer only to the sample(s) tested.

Attention: To check the authenticity of testing / inspection report & certificate, please contact us at telephone: (86-755) 8307 1443, or email: CN.Doccheck@sgs.com

Room 101-901, Plant 4 & Room 101, Plant 2 & Room 101, Plant 3 & Room 301-501, Plant 3, Jianghao (Bantian) Industrial Plant Area, No. 430, Jihua Road, Bantian Community, Bantian Street, Longgang District, Shenzhen, Guangdong, China 518129 www.sgs.com
中国·广东·深圳市龙岗区坂田街道坂田社区吉华路430号江豪(坂田)工业厂区厂房4号101-901、2号101、3号101、3号301-501 邮编:518129 t:(86-755) 25328888 sgs.china@sgs.com

Test Report

No.: SZXEC24001521902

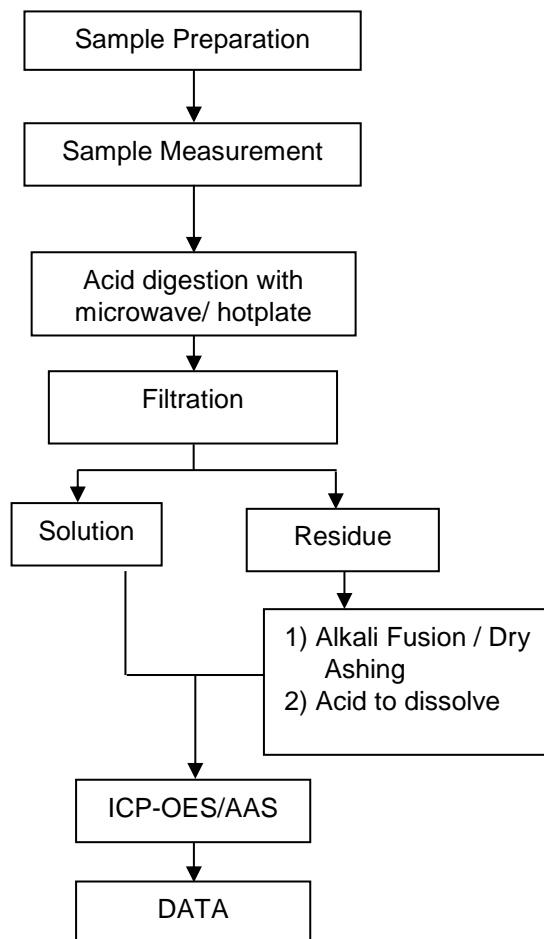
Date: May 23, 2024

Page 4 of 9

ATTACHMENTS

Elements Testing Flow Chart

These samples were dissolved totally by pre-conditioning method according to below flow chart.



SGS-CSI Standards Technical Services Co., Ltd.
Shenzhen Branch Testing Center Chemical Laboratory

Unless otherwise agreed in writing, this document is issued by the Company subject to its General Conditions of Service printed overleaf, available on request or accessible at <http://www.sgs.com/en/Terms-and-Conditions.aspx> and, for electronic format documents, subject to Terms and Conditions for Electronic Documents at <http://www.sgs.com/en/Terms-and-Conditions/Terms-e-Documents.aspx>. Attention is drawn to the limitation of liability, indemnification and jurisdiction issues defined therein. Any holder of this document is advised that information contained hereon reflects the Company's findings at the time of its intervention only and within the limits of Client's instructions, if any. The Company's sole responsibility is to its Client and this document does not exonerate parties to a transaction from exercising all their rights and obligations under the transaction documents. This document cannot be reproduced except in full, without prior written approval of the Company. Any unauthorized alteration, forgery or falsification of the content or appearance of this document is unlawful and offenders may be prosecuted to the fullest extent of the law. Unless otherwise stated the results shown in this test report refer only to the sample(s) tested.

Attention: To check the authenticity of testing / inspection report & certificate, please contact us at telephone: (86-755) 8307 1443, or email: CN.Doccheck@sgs.com

Room 101-901, Plant 4 & Room 101, Plant 2 & Room 101, Plant 3 & Room 301-501, Plant 3, Jianghao (Bantian) Industrial Plant Area, No. 430, Jihua Road, Bantian Community, Bantian Street, Longgang District, Shenzhen, Guangdong, China 518129 www.sgs.com
中国·广东·深圳市龙岗区坂田街道坂田社区吉华路430号江豪(坂田)工业厂区厂房4号101-901、2号101、3号301-501 邮编:518129 t:(86-755) 25328888 sgs.china@sgs.com

Test Report

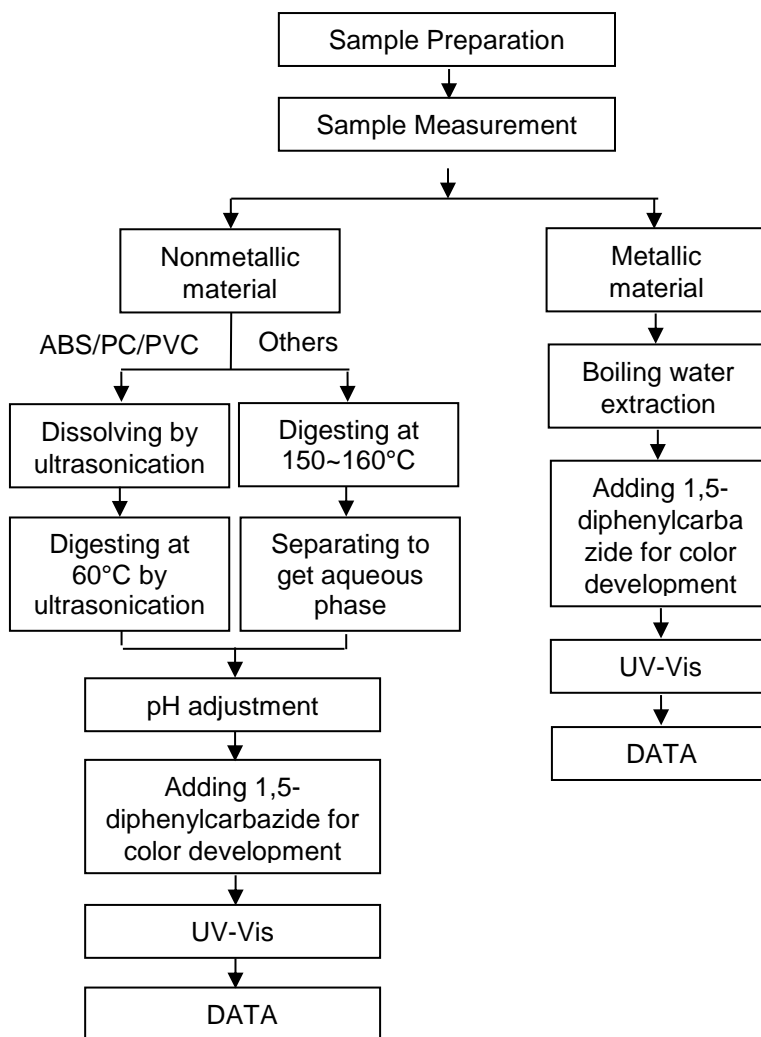
No.: SZXEC24001521902

Date: May 23, 2024

Page 5 of 9

ATTACHMENTS

Hexavalent Chromium (Cr(VI)) Testing Flow Chart



SGS-CSI Standards Technical Services Co., Ltd.
Shenzhen Branch Testing Center Chemical Laboratory

Unless otherwise agreed in writing, this document is issued by the Company subject to its General Conditions of Service printed overleaf, available on request or accessible at <http://www.sgs.com/en/Terms-and-Conditions.aspx> and, for electronic format documents, subject to Terms and Conditions for Electronic Documents at <http://www.sgs.com/en/Terms-and-Conditions/Terms-e-Documents.aspx>. Attention is drawn to the limitation of liability, indemnification and jurisdiction issues defined therein. Any holder of this document is advised that information contained hereon reflects the Company's findings at the time of its intervention only and within the limits of Client's instructions, if any. The Company's sole responsibility is to its Client and this document does not exonerate parties to a transaction from exercising all their rights and obligations under the transaction documents. This document cannot be reproduced except in full, without prior written approval of the Company. Any unauthorized alteration, forgery or falsification of the content or appearance of this document is unlawful and offenders may be prosecuted to the fullest extent of the law. Unless otherwise stated the results shown in this test report refer only to the sample(s) tested.

Attention: To check the authenticity of testing /inspection report & certificate, please contact us at telephone: (86-755) 8307 1443, or email: CN.Doccheck@sgs.com

Room 101-901, Plant 4 & Room 101, Plant 2 & Room 101, Plant 3 & Room 301-501, Plant 3, Jianghao (Bantian) Industrial Plant Area, No. 430, Jihua Road, Bantian Community, Bantian Street, Longgang District, Shenzhen, Guangdong, China 518129 www.sgs.com.cn
中国·广东·深圳市龙岗区坂田街道坂田社区吉华路430号江灏(坂田)工业厂区厂房4号101-901、2号101、3号301-501 邮编:518129 t:(86-755) 25328888 sgs.china@sgs.com

Test Report

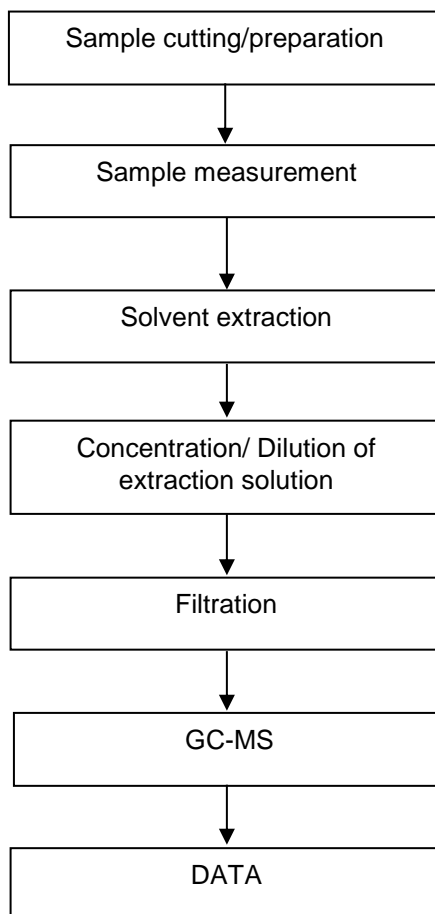
ATTACHMENTS

No.: SZXEC24001521902

Date: May 23, 2024

Page 6 of 9

PBB/PBDE Testing Flow Chart



SGS-CTC Standards Technical Services Co., Ltd.
Shenzhen Branch Testing Center Chemical Laboratory

Unless otherwise agreed in writing, this document is issued by the Company subject to its General Conditions of Service printed overleaf, available on request or accessible at <http://www.sgs.com/en/Terms-and-Conditions.aspx> and, for electronic format documents, subject to Terms and Conditions for Electronic Documents at <http://www.sgs.com/en/Terms-and-Conditions/Terms-e-Documents.aspx>. Attention is drawn to the limitation of liability, indemnification and jurisdiction issues defined therein. Any holder of this document is advised that information contained hereon reflects the Company's findings at the time of its intervention only and within the limits of Client's instructions, if any. The Company's sole responsibility is to its Client and this document does not exonerate parties to a transaction from exercising all their rights and obligations under the transaction documents. This document cannot be reproduced except in full, without prior written approval of the Company. Any unauthorized alteration, forgery or falsification of the content or appearance of this document is unlawful and offenders may be prosecuted to the fullest extent of the law. Unless otherwise stated the results shown in this test report refer only to the sample(s) tested.

Attention: To check the authenticity of testing /inspection report & certificate, please contact us at telephone: (86-755) 8307 1443, or email: CN.Doccheck@sgs.com

Room 101-901, Plant 4 & Room 101, Plant 2 & Room 101, Plant 3 & Room 301-501, Plant 3, Jianghao (Bantian) Industrial Plant Area, No. 430, Jihua Road, Bantian Community, Bantian Street, Longgang District, Shenzhen, Guangdong, China 518129 www.sgs.com
中国·广东·深圳市龙岗区坂田街道坂田社区吉华路430号江灏(坂田)工业厂区厂房4号101-901、2号101、3号301-501 邮编:518129 t:(86-755) 25328888 sgs.china@sgs.com

Test Report

No.: SZXEC24001521902

Date: May 23, 2024

Page 7 of 9

ATTACHMENTS

Phthalates Testing Flow Chart



SGS-CTC Standards Technical Services Co., Ltd.
Shenzhen Branch Testing Center Chemical Laboratory

Unless otherwise agreed in writing, this document is issued by the Company subject to its General Conditions of Service printed overleaf, available on request or accessible at <http://www.sgs.com/en/Terms-and-Conditions.aspx> and, for electronic format documents, subject to Terms and Conditions for Electronic Documents at <http://www.sgs.com/en/Terms-and-Conditions/Terms-e-Documents.aspx>. Attention is drawn to the limitation of liability, indemnification and jurisdiction issues defined therein. Any holder of this document is advised that information contained hereon reflects the Company's findings at the time of its intervention only and within the limits of Client's instructions, if any. The Company's sole responsibility is to its Client and this document does not exonerate parties to a transaction from exercising all their rights and obligations under the transaction documents. This document cannot be reproduced except in full, without prior written approval of the Company. Any unauthorized alteration, forgery or falsification of the content or appearance of this document is unlawful and offenders may be prosecuted to the fullest extent of the law. Unless otherwise stated the results shown in this test report refer only to the sample(s) tested.

Attention: To check the authenticity of testing / inspection report & certificate, please contact us at telephone: (86-755) 8307 1443, or email: CN.Doccheck@sgs.com

Room 101-901, Plant 4 & Room 101, Plant 2 & Room 101, Plant 3 & Room 301-501, Plant 3, Jianghao (Bantian) Industrial Plant Area, No. 430, Jihua Road, Bantian Community, Bantian Street, Longgang District, Shenzhen, Guangdong, China 518129 www.sgs.com
中国·广东·深圳市龙岗区坂田街道坂田社区吉华路430号江灏(坂田)工业厂区厂房4号101-901、2号101、3号301-501 邮编:518129 t:(86-755) 25328888 sgs.china@sgs.com

Test Report

No.: SZXEC24001521902

Date: May 23, 2024

Page 8 of 9

Attachment:

JFC2410-0062FS, JFC2410-0100FS/TS, JFC2410-0250FS/TS, JFC2410-0500FS/TS, JFC2410-0750FS/TS, JFC2410-1100FS/TS, JFC2410-1150FS/TS, JFC2410-1200FS/TS, JFC2410-1250FS/TS, JFC2410-1300FS/TS, JFC2410-1315FS/TS, JFC2410-1350FS/TS, JFC2410-1400FS/TS, JFC2410-1500FS/TS, JFC2410-1600FS/TS, JFC2410-1630FS/TS, JFC2410-1700FS/TS, JFC2410-1800FS/TS, JFC2410-2100FS/TS, JFC2410-2120FS/TS, JFC2410-2150FS/TS, JFC2410-2200FS/TS, JFC2410-2250FS/TS, JFC2410-2300FS/TS, JFC2410-0250FS/TS-300V, JFC2410-0500FS/TS-300V, JFC2410-0750FS/TS-300V, JFC2410-1100FS/TS-300V, JFC2410-1150FS/TS-300V, JFC2410-1200FS/TS-300V, JFC2410-1250FS/TS-300V, JFC2410-1300FS/TS-300V, JFC2410-1315FS/TS-300V, JFC2410-1350FS/TS-300V, JFC2410-1400FS/TS-300V, JFC2410-1500FS/TS-300V, JFC2410-1600FS/TS-300V, JFC2410-1630FS/TS-300V, JFC2410-1700FS/TS-300V, JFC2410-1800FS/TS-300V, JFC2410-2100FS/TS-300V, JFC2410-0250FS/TS-350V, JFC2410-0500FS/TS-350V, JFC2410-0750FS/TS-350V, JFC2410-1100FS/TS-350V, JFC2410-1150FS/TS-350V, JFC2410-1200FS/TS-350V, JFC2410-1250FS/TS-350V, JFC2410-1300FS/TS-350V, JFC2410-1315FS/TS-350V, JFC2410-1350FS/TS-350V, JFC2410-1400FS/TS-350V, JFC2410-1500FS/TS-350V, JFC2410-1600FS/TS-350V, JFC2410-1630FS/TS-350V, JFC2410-1700FS/TS-350V, JFC2410-1800FS/TS-350V, JFC2410-2100FS/TS-350V, JFC0456-0200FS/TS, JFC0456-0250FS/TS, JFC0456-0300FS/TS, JFC0456-0315FS/TS, JFC0456-0375FS/TS, JFC0456-0400FS/TS, JFC0456-0500FS/TS, JFC0456-0600FS/TS, JFC0456-0630FS/TS, JFC0456-0700FS/TS, JFC0456-0750FS/TS, JFC0456-0800FS/TS, JFC0456-1100FS/TS, JFC0456-1125FS/TS, JFC0456-1150FS/TS, JFC0456-1160FS/TS, JFC0456-1200FS/TS, JFC0456-1250FS/TS, JFC0456-1300FS/TS, JFC0456-1315FS/TS, JFC0456-1350FS/TS, JFC0456-1400FS/TS, JFC0456-1500FS/TS, JFC0456-1600FS/TS, JFC0456-1630FS/TS, JFC0456-1700FS/TS, JFC0456-2100FS/TS, JFC0456-2150FS/TS, JFC0456-2200FS/TS, JFC0456-2250FS/TS, JFC0456-2300FS/TS, JFC0456-2400FS/TS, JFC0456-2500FS/TS, JFC0456-2600FS/TS, JFC0456-2800FS/TS, JFC0456-3100FS/TS, JFC1032-0200FS/TS, JFC1032-0250FS/TS, JFC1032-0300FS/TS, JFC1032-0315FS/TS, JFC1032-0375FS/TS, JFC1032-0400FS/TS, JFC1032-0500FS/TS, JFC1032-0600FS/TS, JFC1032-0630FS/TS, JFC1032-0700FS/TS, JFC1032-0750FS/TS, JFC1032-0800FS/TS, JFC1032-1100FS/TS, JFC1032-1125FS/TS, JFC1032-1150FS/TS, JFC1032-1160FS/TS, JFC1032-1200FS/TS, JFC1032-1250FS/TS, JFC1032-1300FS/TS, JFC1032-1315FS/TS, JFC1032-1350FS/TS, JFC1032-1400FS/TS, JFC1032-1500FS/TS, JFC1032-1600FS/TS, JFC1032-1630FS/TS, JFC1032-1700FS/TS, JFC1032-2100FS/TS, JFC1032-2150FS/TS, JFC1032-2200FS/TS, JFC1032-2250FS/TS, JFC1032-2300FS/TS, JFC1032-2400FS/TS, JFC1245-2300FS/TS, JFC1245-2400FS/TS, JFC1245-2500FS/TS, JFC1245-2600FS/TS, JFC1245-2800FS/TS, JFC1245-3100FS/TS, J2822HC40, J2822HC50, J2822HC60, J2822HC80, J2822HC100, J2822HC125



SGS-CTC Standards Technical Services Co., Ltd.
Shenzhen Branch Testing Center Chemical Laboratory

Unless otherwise agreed in writing, this document is issued by the Company subject to its General Conditions of Service printed overleaf, available on request or accessible at <http://www.sgs.com/en/Terms-and-Conditions.aspx> and, for electronic format documents, subject to Terms and Conditions for Electronic Documents at <http://www.sgs.com/en/Terms-and-Conditions/Terms-e-Documents.aspx>. Attention is drawn to the limitation of liability, indemnification and jurisdiction issues defined therein. Any holder of this document is advised that information contained hereon reflects the Company's findings at the time of its intervention only and within the limits of Client's instructions, if any. The Company's sole responsibility is to its Client and this document does not exonerate parties to a transaction from exercising all their rights and obligations under the transaction documents. This document cannot be reproduced except in full, without prior written approval of the Company. Any unauthorized alteration, forgery or falsification of the content or appearance of this document is unlawful and offenders may be prosecuted to the fullest extent of the law. Unless otherwise stated the results shown in this test report refer only to the sample(s) tested.

Attention: To check the authenticity of testing / inspection report & certificate, please contact us at telephone: (86-755) 8307 1443, or email: CN.Doccheck@sgs.com

Room 101-901, Plant 4 & Room 101, Plant 2 & Room 101, Plant 3 & Room 301-501, Plant 3, Jianghao (Bantian) Industrial Plant Area, No. 430, Jihua Road, Bantian Community, Bantian Street, Longgang District, Shenzhen, Guangdong, China 518129 www.sgs.com.cn
中国·广东·深圳市龙岗区坂田街道坂田社区吉华路430号江灏(坂田)工业厂区厂房4号101-901、2号101、3号301-501 邮编:518129 t:(86-755) 25328888 sgs.china@sgs.com

Test Report

No.: SZXEC24001521902

Date: May 23, 2024

Page 9 of 9

Sample Photo:



SGS authenticate the photo on original report only
*** End of Report ***



SGS-CSI Standards Technical Services Co., Ltd.
Shenzhen Branch Testing Center Chemical Laboratory

Unless otherwise agreed in writing, this document is issued by the Company subject to its General Conditions of Service printed overleaf, available on request or accessible at <http://www.sgs.com/en/Terms-and-Conditions.aspx> and, for electronic format documents, subject to Terms and Conditions for Electronic Documents at <http://www.sgs.com/en/Terms-and-Conditions/Terms-e-Documents.aspx>. Attention is drawn to the limitation of liability, indemnification and jurisdiction issues defined therein. Any holder of this document is advised that information contained hereon reflects the Company's findings at the time of its intervention only and within the limits of Client's instructions, if any. The Company's sole responsibility is to its Client and this document does not exonerate parties to a transaction from exercising all their rights and obligations under the transaction documents. This document cannot be reproduced except in full, without prior written approval of the Company. Any unauthorized alteration, forgery or falsification of the content or appearance of this document is unlawful and offenders may be prosecuted to the fullest extent of the law. Unless otherwise stated the results shown in this test report refer only to the sample(s) tested.

Attention: To check the authenticity of testing /inspection report & certificate, please contact us at telephone: (86-755) 8307 1443, or email: CN.Doccheck@sgs.com

Room 101-901, Plant 4 & Room 101, Plant 2 & Room 101, Plant 3 & Room 301-501, Plant 3, Jianghao (Bantian) Industrial Plant Area, No. 430, Jihua Road, Bantian Community, Bantian Street, Longgang District, Shenzhen, Guangdong, China 518129 www.sgs.com
中国·广东·深圳市龙岗区坂田街道坂田社区吉华路430号江豪(坂田)工业厂区厂房4号101-901、2号101、3号101、3号301-501 邮编:518129 t:(86-755) 25328888 sgs.china@sgs.com